

## Backward curved centrifugal fans KABB/KABT Series

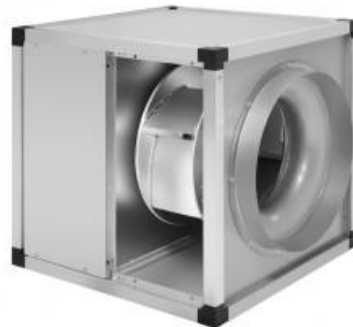
### Serial KABT

#### KABT/4-6000/400 1,1KW 230/400V VE

Cabinet fans manufactured from galvanised steel sheet with double thickness side panels lined with 17 mm thickness of fireproof fibreglass acoustic insulation (M0). Circular duct connection flange on the inlet.

KABB / KABT incorporates direct driven aluminium backward curved centrifugal impeller with motor fitted outside of the air stream.

Supplied with galvanized drip tray and copper drain.



#### Motors

- KABB: Single-phase 4 pole motor 230V-50Hz, IP55, class F, with thermal protection, speed controllable by tension.

Maximum temperature around the motor:

KABB/4-3000/315: 70°C

KABB/4-4000/355: 50°C

KABB/4-6000/450: 40°C



- From KABT/4-3000/315 to KABT/4-9000/500:

Three-phase 4 pole motor 230/400V-50Hz, IP55, Class F, with thermal protection, speed controllable by inverter.

- KABT/4-12000/560:

Three-phase 4 pole motor 400V-50Hz, IP55, Class F, with thermal protection, speed controllable by inverter.

#### Additional information

Working temperature from -20°C to 100°C.

### Technical data