

Roof Mounted Fans CTB Series

CTB

Range of centrifugal roof fans which are mounted directly above a circular duct for the ventilation of housings and small enclosures.

Centrifugal backward curved impeller in galvanised sheet steel.

Galvanised steel sheet housing protected by black epoxy polyester paint.

All models are fitted with bird proof guard.

4 different sizes for diameter ducts 160, 200, 250 and 315 mm.

ON-OFF switch IP55.

Duct connection flange with integrated rubber air seal and thermal protector.



Motors

All motors are IP54, Class F, direct drive.

Electrical supply:

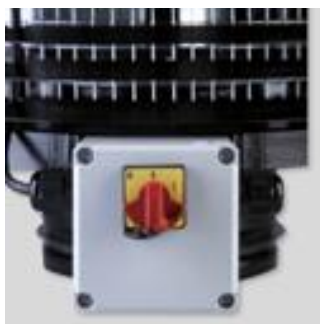
-Single phase motor 230V 50Hz.

-Variable voltage.

Working temperature: -40°C/+70°C.

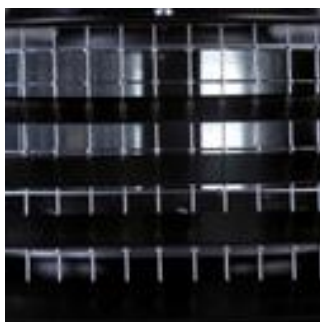


Attributes



Isolation switch

ON-OFF electrical isolation switch fitted on the fan as standard.



Bird proof guard

Steel finger proof guard.