



Centrifugal Single Inlet Plastic Flame Proof Fans CMPT (2) ATEX Series

CMPT (2) ATEX

Range of single inlet direct drive centrifugal fans manufactured by injection moulding. Antistatic polypropylene housing. Motor support and anticorrosive gaskets material providing protection against possible gas leakage. High-performance antistatic polypropylene impeller with forward curved blades. Working temperature from -10 to 50 °C.

Motors

All motors are IP55, class F insulation. Available in 2, 4 or 6 poles.

Electrical supply:

-Three phase 230/400V-50Hz.

(See characteristics chart).

Additional information

The mounting frames are manufactured from:

-Nylon (models from 14 to 25)

-Polypropylene (models 30 and 35).

-Galvanised sheet steel (model 42).

Standard supplied position: LG 0.

The scroll can be oriented in 8 different positions. Screws in stainless steel.



ATEX

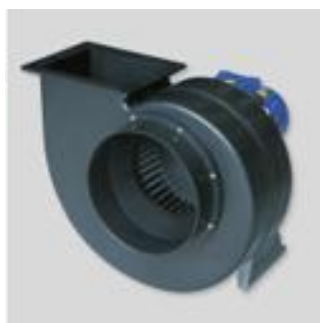
ATEX Versions ATEX versions available for 3-phase models. For ambient working temperature -10°C to +40°C. Motor IP55, Class F.- ATEX Flameproof - GasII 2G Exd IIB T4II 2G Exd IIB+H2 T4, con motor Exd IIC T4 (with motor Exd IIC T4) To select CMPT ATEX refer to performance data, or Easyvent. Note: electrical data may vary for ATEX motor.

Attributes



Discharge circular duct connection

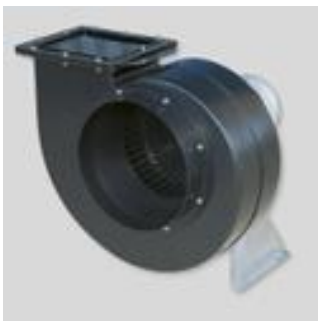
For models CMPT-14, CMPT-20 and CMPT-25.



Discharge rectangular duct connection

For models CMPT-30, CMPT-35, CMPT-42 and CMPT-20A

* On request, CMPT-14, CMPT- 20 and CMPT-25 are also available with discharge rectangular duct connection.



Tough and quality design

Antistatic polypropylene housing. Screws in stainless steel.



Forward curved centrifugal impeller

High-performance antistatic polypropylene impeller with forward curved blades.