

Axial Smoke Extractor Jet Fans TJHT-TJHU Series

TJHT-TJHU

Axial jet fans to induce air movement in enclosed car parking, tunnels and large spaces. Suitable for ventilation and one off emergency smoke operation at F400 or F300.

TJHT series: reversible.

TJHU series: unidirection.

Description

Diameters from:

TJHT series: 315 to 630mm, fully reversible.

TJHU series: 315 to 400mm, unidirection.

Impeller is cast aluminum alloy in accordance with EN 1706, and balanced in accordance with ISO 14694: G 6.3.

Fan duct and 2 mounting feet are steel in accordance with EN 10130-99, and hot dip galvanized in accordance with EN 1461: 1999.

Fan external electrical terminal box.

Two circular sound attenuators in galvanized sheet steel, with flared inlet and acoustic media.

Supplied with inlet and outlet steel guard.

Impeller with 6 (TJHT) or 7 (TJHU) blades.

Fan approved in accordance EN12101-3.

For transportation, size up to 400 is supplied complete. Diameter from 450 to 630 can be supplied in 3 pieces.

Motors

TJHT series: IEC, from 80 to 160, 3 phase 380-415V-50Hz, IP55, Class H, F400-120 and F300-120.

TJHU series: IEC, from 80 to 90, 3 phase 380-415V-50Hz, IP55, Class H, F400-120 and F300-120. Class F at F200-120.

Available in 60Hz.

Two speed 2/4 pole Dalhander winding.

Ambient temperature: -20°C to +40°C.

Working temperature from -20°C to +40°C.

On request

Single speed 2 pole motor.

Inlet guard and steel discharge deflector for unidirectional airflow.

Inlet and outlet steel discharge deflector for reversible airflow.

Factory fitted IP65 isolator in place of electrical terminal box. Isolator also available as an accessory for use with standard terminal box fan.

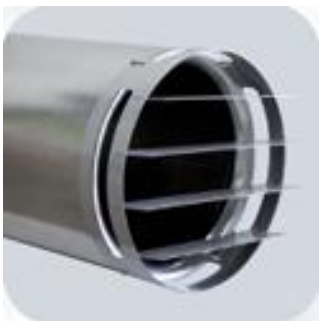
External painting to RAL colour.



Attributes



Two protection guards fitted as standard.

**Optional deflector**

on outlet for uni direction, or inlet and outlet for reversible.



External terminal box for ease of connection.

**Optional isolator**

Electrical Isolator fitted to fan for security or as an accessory.